



**MASONRY  
& SLATE**  
Quality First

designer

**WATER FEATURES**

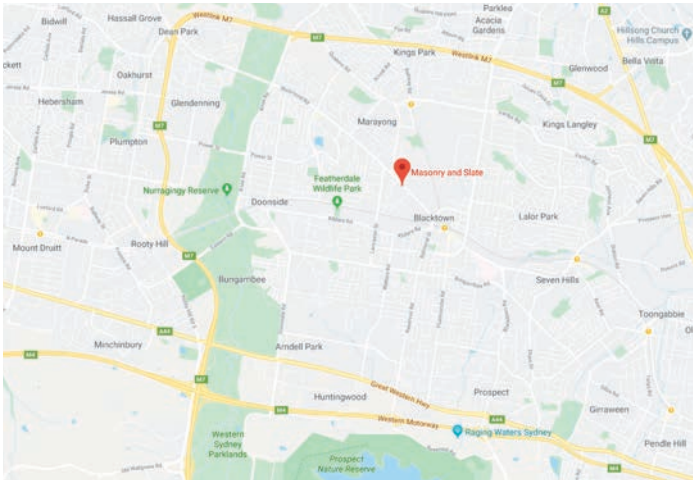


RETAINING WALLS | PAVING | WATER FEATURES & MORE

**PRODUCT CATALOGUE**

# VISIT OUR SHOWROOM FOR SOME IDEAS AND INSPIRATION

Drop into our **Blacktown** showroom at **98 Richmond Road**, and see the difference. We are only minutes from the M4 and the M7 in Sydney.



Google and the Google logo are registered trademarks of Google LLC, used with permission.

## NOTES

---

---

---

---

---

---

---

---

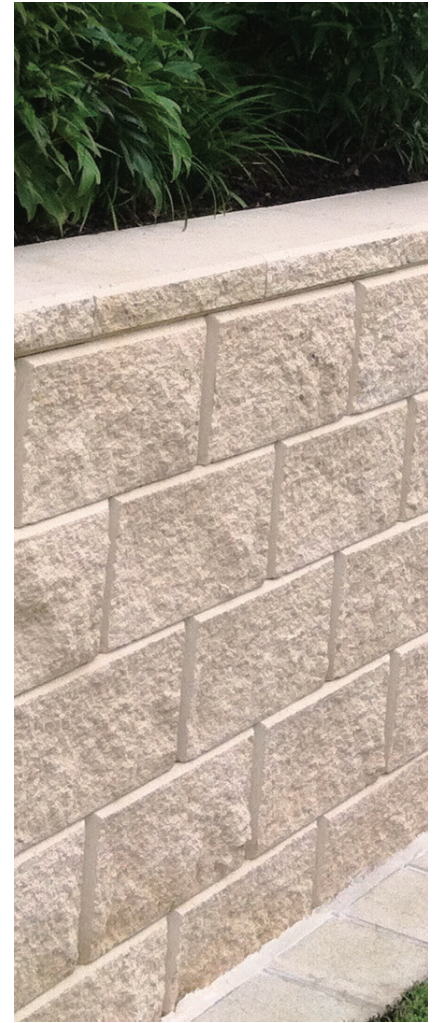


## TASMAN

This quality, near vertical retaining wall system is a great do it yourself solution. No concrete footings are needed and they are flexible. You can achieve anything from 90° corners, steps, straight and even curved walls.

DESCRIPTION	CODE	LENGTH (mm)	WIDTH (mm)	HEIGHT (mm)	QTY	PALLET QTY
Tasman Full Block	225-01	390	225	200	13 /m <sup>2</sup>	75
Tasman Full Corner	225-34	145	340	200		
Tasman Half Corner	225-14	145	235	200		
Tasman Full Cap	60-240	390	240	60	2.5 /m	120
Tasman Half Cap	60-230	200	225	60	5 /m	300

### AVAILABLE COLOURS

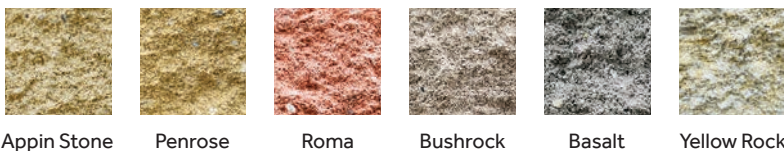


## NORFOLK

This economic, low maintenance retaining wall system is a great do it yourself solution. No mortar is required and is structurally sound. You can achieve both straight and curved walls.

DESCRIPTION	CODE	LENGTH (mm)	WIDTH (mm)	HEIGHT (mm)	QTY	PALLET QTY
Norfolk Block	020-144	390	190	180	14 /m <sup>2</sup>	90
Norfolk Capping Block	020-146	390	190	180	2.56 /m	90

### AVAILABLE COLOURS



## WET CAST CONCRETE Hewnstone

This range is in the 400 x 400 x 40mm size. The Hewnstone range is available in two finishes – smooth and course. Tile thickness (20mm) is also possible. Any colour is available for any of our paving range. Matching bullnose is available for both finishes as well as 'square edge' bullnose.

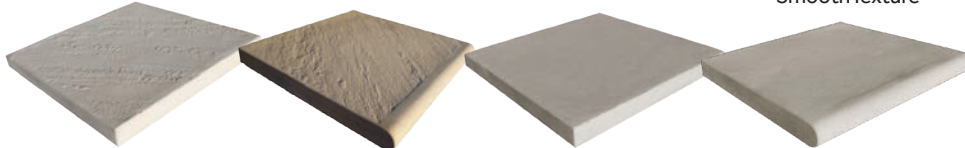
DESCRIPTION	CODE	LENGTH (mm)	WIDTH (mm)	THICK (mm)
Hewnstone Course Paver		400	400	40
Hewnstone Course Bullnose		400	400	40
Hewnstone Smooth Paver		400	400	40
Hewnstone Smooth Bullnose		400	400	40



Course Texture



Smooth Texture



Course Paver

Course Bullnose

Smooth Paver

Smooth Bullnose

## WET CAST CONCRETE Courtstone

The Courtstone paver has cobbled edges for the antique appearance. It is only available in the 580 x 400 x 40mm size (tile thickness is possible).

DESCRIPTION	CODE	LENGTH (mm)	WIDTH (mm)	THICK (mm)
Courtstone Paver		580	400	40
Courtstone Bullnose		580	400	40



Courtstone Texture



Courtstone Paver

Courtstone Bullnose



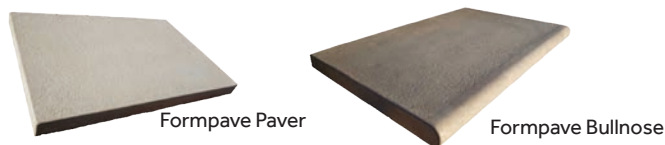
## WET CAST CONCRETE Formpave

Formpave is available in 600 x 400 x 40mm. It has a matching bullnose for around pools or stairs.

DESCRIPTION	CODE	LENGTH (mm)	WIDTH (mm)	THICK (mm)
Formpave Paver		580	400	40
Formpave Bullnose		600	400	40



Courtstone Texture



Formpave Paver

Formpave Bullnose



## WET CAST CONCRETE Colours



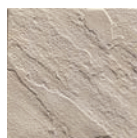
Pearl



Beach



Ivory



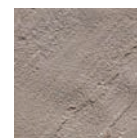
Limestone



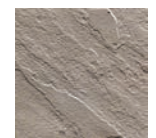
Sandstone



Creamstone



Ivory Tan



Sage

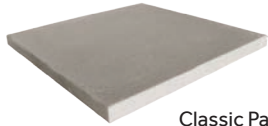
## WET CAST CONCRETE Classic

The Classic is available in 500 x 500 x 35mm with a matching bullnose the same size at 500 x 500 x 35mm. The texture is subtle and looks relatively smooth from a distance.

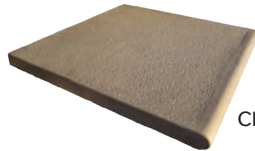
DESCRIPTION	CODE	LENGTH (mm)	WIDTH (mm)	THICK (mm)
Classic Paver		500	500	35
Classic Bullnose		500	500	35



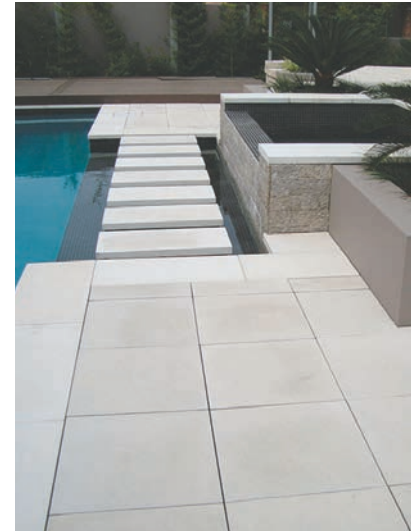
Classic Texture



Classic Paver



Classic Bullnose



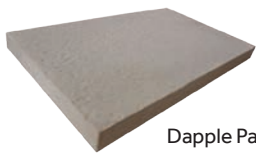
## WET CAST CONCRETE Dapple

The Dapple finish is available in two sizes – 500 x 500 x 35mm and 500 x 350 x 40mm. The bullnose is available in 500 x 500 x 40mm.

DESCRIPTION	CODE	LENGTH (mm)	WIDTH (mm)	THICK (mm)
Dapple Paver 35		500	500	35
Dapple Paver 40		500	500	40



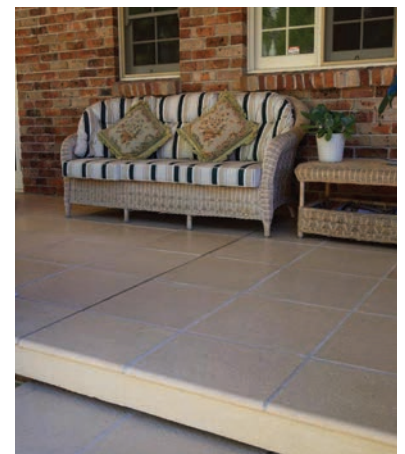
Dapple Texture



Dapple Paver



Dapple Bullnose



## WET CAST CONCRETE Gangsawn

The Gangsawn is available in 450 x 450 x 40mm size (tile thickness is also available). The matching bullnose is 450 x 350 x 40mm with the bullnose on the 450mm side.

DESCRIPTION	CODE	LENGTH (mm)	WIDTH (mm)	THICK (mm)
Gangsawn Paver		500	500	35
Gangsawn Bullnose		500	500	35



Gangsawn Texture



Gangsawn Paver



Gangsawn Bullnose

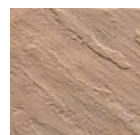
## WET CAST CONCRETE Colours



Silvermist



Coffee



Sunset



Honeycomb



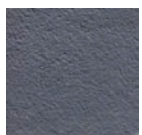
Terracotta



Bush



Suede



Charcoal

## COLOURSTONE Easy Pave

Easy Pave pavers are suitable for driveway applications for domestic vehicles, landscape terraces and footpaths.

DESCRIPTION	CODE	LENGTH (mm)	WIDTH (mm)	THICK (mm)	WEIGHT (Kg)	PALLET QTY
Easy Pave	50-33	190	190	40	50	30

### AVAILABLE COLOURS



Opal White



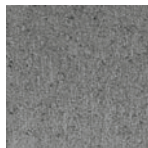
Appin Stone



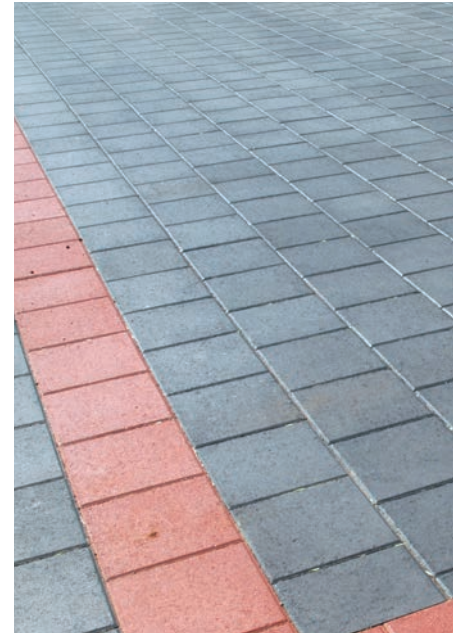
Roma



Bushrock



Basalt



## COLOURSTONE Metric Pave

Metric Range pavers are suitable for residential driveways, pedestrian footpaths, malls and minor roads

DESCRIPTION	CODE	LENGTH (mm)	WIDTH (mm)	THICK (mm)	WEIGHT (Kg)	PALLET QTY
Metric Pave	60-230	200	100	60	50	30

### AVAILABLE COLOURS



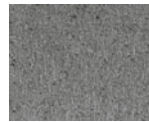
Appin Stone



Roma



Bushrock



Basalt

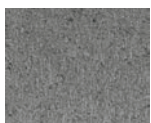


## BROADWAY Pavers

Broadway pavers are ideal for everyday living ideas, in courtyards, paths and other outdoor spaces.

DESCRIPTION	CODE	LENGTH (mm)	WIDTH (mm)	THICK (mm)	WEIGHT (Kg)	PALLET QTY
Broadway Paver 300		300	300	50	9.8	
Broadway Paver 400		400	400	45	16	

### AVAILABLE COLOURS



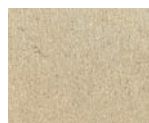
Charcoal



Nutmeg



Almond



Sandstone



## SEALING PRODUCTS

We have a great range of sealing products from leading companies such as Drytreat, Environex and SRW for your pavers, retaining walls and natural stone to keep it looking as good as new.

### WHY SEAL STONE OR TILES?

Natural stone and tiles are porous by nature. If you want to protect your investment, we highly recommend sealing. Sealing prevents and reduces dis-colouration and staining that will occur overtime.



**DRY TREAT**  
Excellence in sealing products™

WORLD LEADING SEALERS FOR THE PROTECTION OF NATURAL STONE, TILES, PAVERS, CONCRETE, BRICKS AND GROUT.

**Environex**  
International

REFRESH  
ANTY-EFF

**SRW**  
PRODUCTS  
solid solutions to better hardscapes

**Sealers**

Stone Seal  
Stone Seal SPS

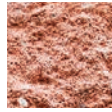
**CONTACT US FOR MORE DETAILS**

## SPLITFACE

This quality, near vertical retaining wall system is a great do it yourself solution. No concrete footings are needed and they are flexible. You can achieve anything from 90° corners, steps, straight and even curved walls.

DESCRIPTION	CODE	LENGTH (mm)	WIDTH (mm)	HEIGHT (mm)	QTY	PALLET QTY
100 Split Face Block	10-121	390	90	190	14 /m <sup>2</sup>	144
100 Split Face Half Block	10-123	190	90	190	28/m <sup>2</sup>	288
200 Split Face Block	20-121	390	190	190	14 /m <sup>2</sup>	90
200 Split Face Half Block	20-123	190	190	190	28/m <sup>2</sup>	180
200 Coloured Caping	50-31	390	195	40	5 /m	288

### AVAILABLE COLOURS



Opal White

Appin Stone

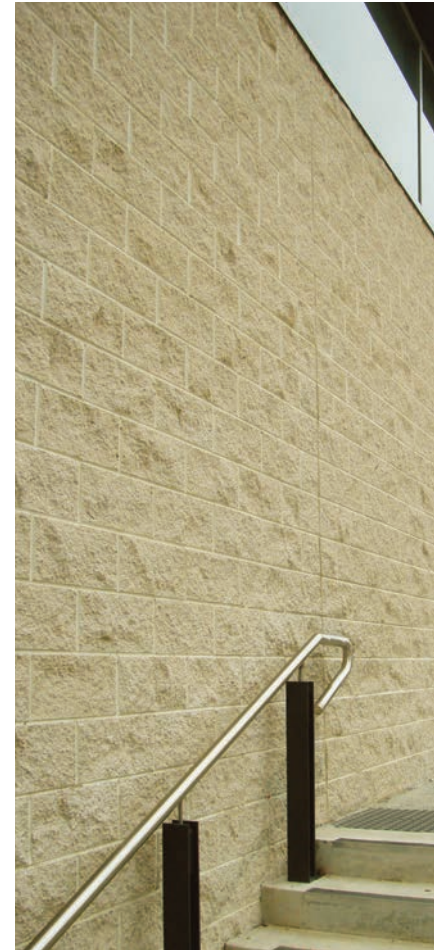
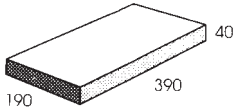
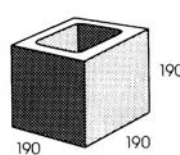
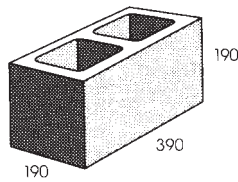
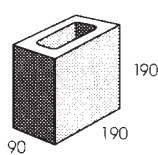
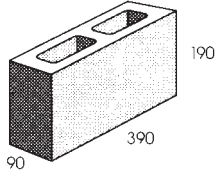
Penrose

Roma

Bushrock

Basalt

Yellow Rock

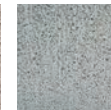


## SMOOTHFACE

This quality, near vertical retaining wall system is a great do it yourself solution. No concrete footings are needed and they are flexible. You can achieve anything from 90° corners, steps, straight and even curved walls.

DESCRIPTION	CODE	LENGTH (mm)	WIDTH (mm)	HEIGHT (mm)	QTY	PALLET QTY
100 Split Face Block	10-121	390	90	190	14 /m <sup>2</sup>	144
100 Split Face Half Block	10-123	190	90	190	28/m <sup>2</sup>	288
200 Split Face Block	20-121	390	190	190	14 /m <sup>2</sup>	90
200 Split Face Half Block	20-123	190	190	190	28/m <sup>2</sup>	180
200 Coloured Caping	50-31	390	195	40	5 /m	288

### AVAILABLE COLOURS



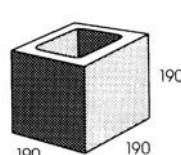
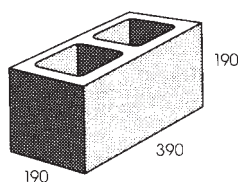
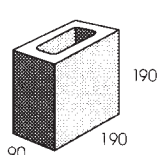
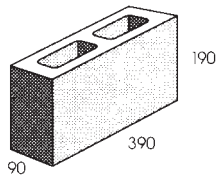
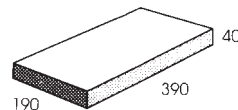
Opal White

Appin Stone

Roma

Bushrock

Basalt





## NATURESTONE Rock Face Blocks

Achieve the beauty of natural stone as well as the structural properties of concrete masonry blocks! Nature stone is easy to lay, easy to reinforce and cost effective.

DESCRIPTION	CODE	LENGTH (mm)	WIDTH (mm)	HEIGHT (mm)	QTY	PALLET QTY
Rock Face Full Block	CODE 20NS RF	390	220	190	13 /m <sup>2</sup>	75
Rock Face Half Block	CODE 20NS RF 1/2	190	220	190		
Rock Face Full Corner	CODE 20NS RF CNR	420	220	190		
Rock Face Half Corner	CODE 20NS RF 1/2CNR	220	220	190	2.5 /m	120
Cap Rock Face	CODE NS CAP RF	400	260	60	5 /m	300
Corner Cap Rock Face	CODE NS CNR CAP RF	400	260	60		

note: natural stone can have a variance of +/- 10mm



NatureStone  
Rock Face Full Block



NatureStone  
Rock Face Half Block



NatureStone  
Rock Face Full Corner



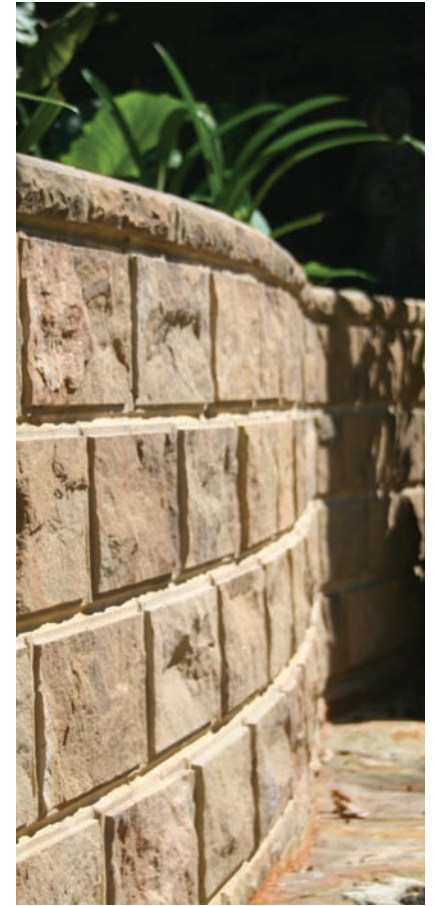
NatureStone  
Rock Face Half Corner



NatureStone  
Cap Rock Face



NatureStone  
Corner Cap Rock Face



## NATURESTONE Honed Blocks

Achieve the beauty of natural stone as well as the structural properties of concrete masonry blocks! Nature stone is easy to lay, easy to reinforce and cost effective.

DESCRIPTION	CODE	LENGTH (mm)	WIDTH (mm)	HEIGHT (mm)	QTY	PALLET QTY
Honed Full Block	CODE 20NS H	390	220	190	13 /m <sup>2</sup>	75
Honed Half Block	CODE 20NS H1/2	190	220	190		
Honed Full Corner	CODE 20NS H CNR	420	220	190		
Honed Half Corner	CODE 20NS H 1/2CNR	220	220	190	2.5 /m	120
Cap Honed Face	CODE NS CAP H	400	260	60	5 /m	300
Corner Cap Honed	CODE NS CNR CAP H	400	260	60		

note: natural stone can have a variance of +/- 10mm



NatureStone  
Rock Face Full Block



NatureStone  
Rock Face Half Block



NatureStone  
Rock Face Full Corner



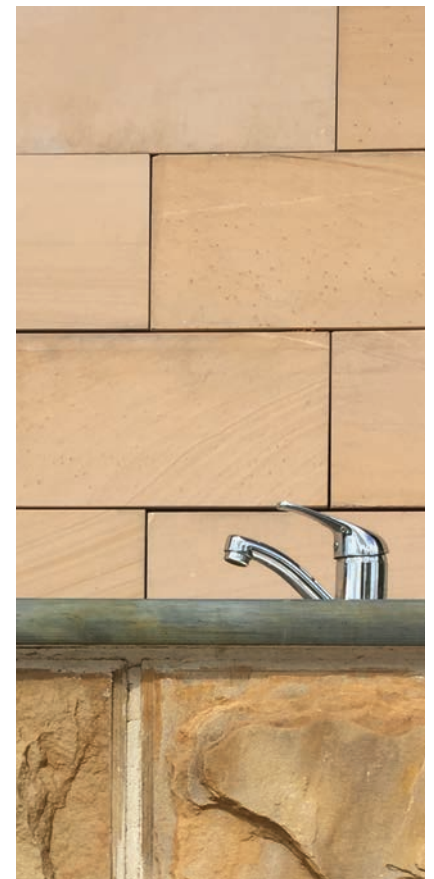
NatureStone  
Rock Face Half Corner



NatureStone  
Cap Rock Face



NatureStone  
Corner Cap Rock Face



## STONEFACE Stone Face Blocks

StoneFace™ is a new concept in architectural masonry developed by Baines Masonry. This is a reconstituted stone finish inspired by our unique Australian landscape, both rugged and stunning, and comes in four finishes. .



BushRock Blend



Charcoal Blend



YellowRock Blend



OpalRock Blend

StoneFace™ full blocks come in 6 profiles

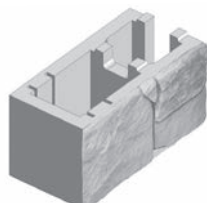


DESCRIPTION	CODE	LENGTH (mm)	WIDTH (mm)	HEIGHT (mm)
StoneFace Standard Full Block	LB/SF 20-91	398	230	198
StoneFace Full End Block Single Face	LB/SF 20-92	390	230	198
StoneFace Double Face Full End Corner	LB/SFD 20-92	420	230	198
StoneFace Double Face Finger End Corner	LB/SFDF 20-92	420	230	198
StoneFace Half End Block Single Face	LB/SF 20-93	190	230	198
StoneFace Half Double Face End Corner	LB/SFD 20-93	190	230	198
StoneFace Half Double Face Finger End Corner	LB/SFDF 20-93	190	230	198
StoneFace Capping	SF CAPPING	500	300	40

note: StoneFace can have a variance of +/- 10mm



StoneFace Standard Full Block - 1 Face



StoneFace Full End Block - 1 Face



StoneFace Full Corner - 1 Face + 1 End



StoneFace Half End Block - 1 Face



StoneFace Half Corner - 1 Face + 1 End



StoneFace Cap Stone - 1 Face

Note: Full Corners and Half Corners are universal. No right hand and left hand corners required.



ASK US! STONEFACE Veneer options also available

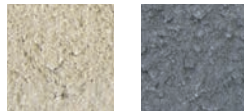
## GARDEN EDGE

Metric Range pavers are suitable for residential driveways, pedestrian footpaths, malls and minor roads

DESCRIPTION	CODE	LENGTH (mm)	WIDTH (mm)	THICK (mm)	WEIGHT (Kg)	PALLET QTY
Garden Edge Blocks and corners		366	190	70		
Garden Edge Solid		390	90	90		
Garden Edge 60ml metric	60-230	200	100	60	50	30

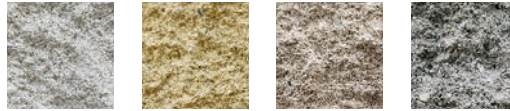
### Garden Edge Blocks and coners

### AVAILABLE COLOURS



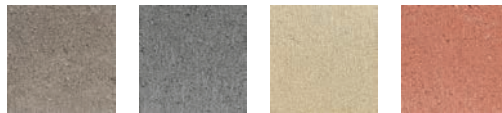
Appin Stone Charcoal

### Garden Edge Solid

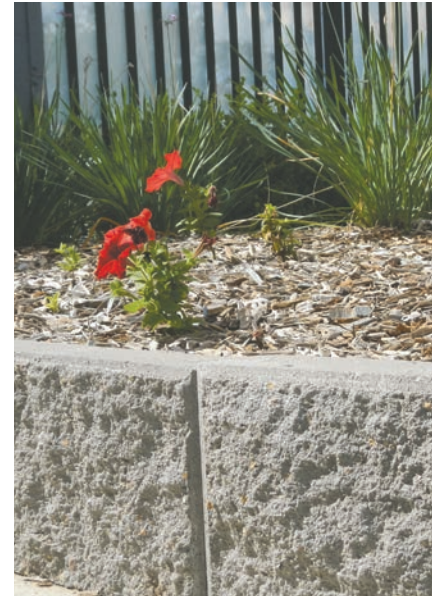


Opal White Appin Stone Bushrock Basalt

### Garden 60ml metric



Bushrock Charcoal Appin Stone Berrima

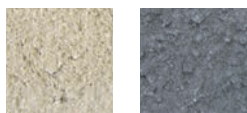


## GARDENSTONE

This easy to use, do it yourself garden edging is flexible for straight and curved borders. They come double faced. No concrete is required and only weighs 8kg per block

DESCRIPTION	CODE	LENGTH (mm)	WIDTH (mm)	HEIGHT (mm)	QTY	PALLET QTY
Appin Stone cap	GSBAS:Cap	210	190	120	40/m <sup>2</sup>	180
Appin Stone Block	GSCASBlock	210	190	120	4.8 /m	180
Basalt Cap	GSBBA:Cap	210	190	120	40/m <sup>2</sup>	180
Basalt Block	GSBBA	210	190	120	4.8 /m	180

### AVAILABLE COLOURS



Appin Stone Charcoal



Gardenstone Block



Gardenstone Capping Block

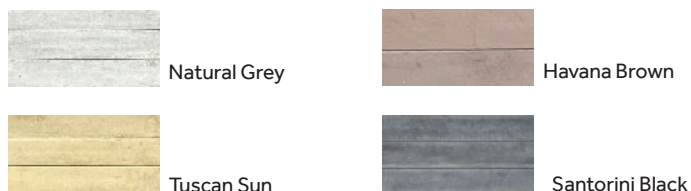


## SLEEPERS Wallaroo Smooth Face

Wallaroo sleepers are manufactured from high strength concrete and reinforced steel. This easy to install system uses steel posts, a combination of 'H' section and channels to build any wall. Sleepers can be cut to any length.

DESCRIPTION	CODE	LENGTH (mm)	WIDTH (mm)	HEIGHT (mm)	WEIGHT (Kg)	PALLET QTY
Wallaroo Smooth Face	12-101	1800	80	200	65	30

AVAILABLE COLOURS

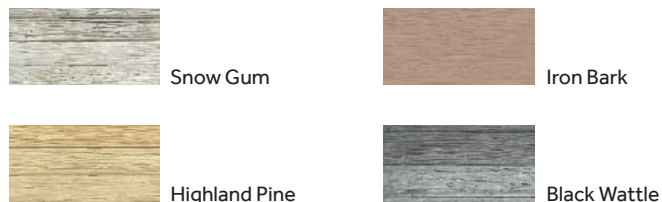


## SLEEPERS Wallaroo Woodgrain

Wallaroo sleepers are manufactured from high strength concrete and reinforced steel. This easy to install system uses steel posts, a combination of 'H' section and channels to build any wall. Sleepers can be cut to any length.

DESCRIPTION	CODE	LENGTH (mm)	WIDTH (mm)	HEIGHT (mm)	WEIGHT (Kg)	PALLET QTY
Wallaroo Woodgrain	12-101	1800	80	200	65	30

AVAILABLE COLOURS

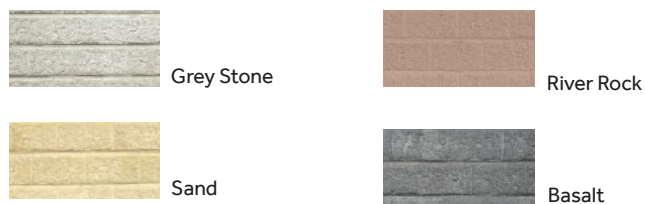


## SLEEPERS Wallaroo Rock-Face

Wallaroo sleepers are manufactured from high strength concrete and reinforced steel. This easy to install system uses steel posts, a combination of 'H' section and channels to build any wall. Sleepers can be cut to any length.

DESCRIPTION	CODE	LENGTH (mm)	WIDTH (mm)	HEIGHT (mm)	WEIGHT (Kg)	PALLET QTY
Wallaroo Rock-Face	12-101	1800	80	200	65	30

AVAILABLE COLOURS



Shutes and Descents



50cm Curved Shute



60cm Projecting Decent



20x20cm Square Spout



15cm Square Shute



15cm Square Shute



15cm Square Shute



20cm Curved Shute



50cm Curved Shute



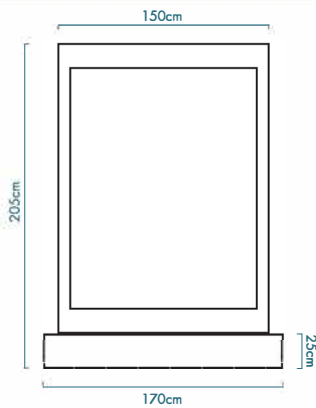
## Wall Features

Hand crafted from volcanic stone any wall can be designed to your specifications. All wall packages include: stone base, pump, mesh, pebbles (black or white)  
Stainless steel lighting is additional & very highly recommended, this creates an amazing abundance.

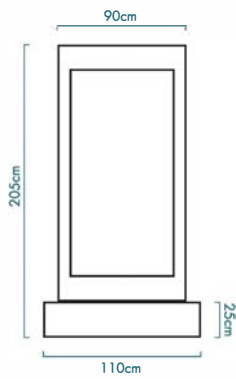


### Size

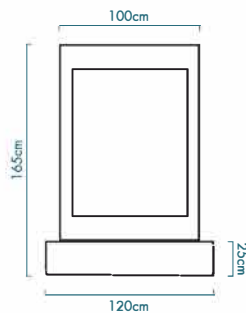
#### Large



#### Medium



#### Small



#### Pond Base

Depth is the same for all walls



### Stone, Copper or Stainless Steel Materials



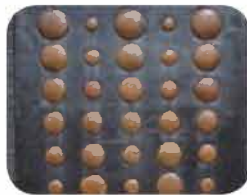
Black & Shiny Triangles



Black Squares



Bocci Balls



Circles Out



Citylife



Dandelion



Shiny Abstract



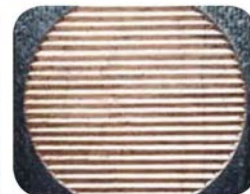
Black Louver



Shiny Louver



Stainless Steel



Sunset



Tulip



Cherry Blossom



Grapevine



Shiny Squares

solid base for walls/towers is preferred: concrete slab should be 80mm (deep) or levelled solid crushed rock base with pavers

## Tower Water Features

Hand crafted from volcanic stone any copper insert or stainless steel tower can be designed to your specifications.

Stainless steel lighting is additional and highly recommended as it creates an amazing ambience.

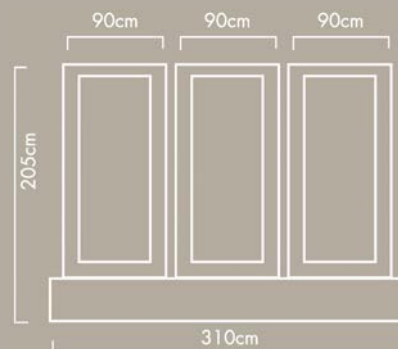


### Copper Insert Variety

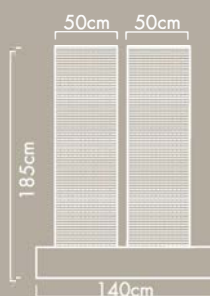
### Texture & Grind Stone

### Giant Triple Tower

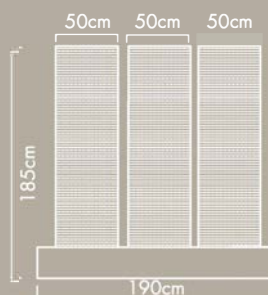
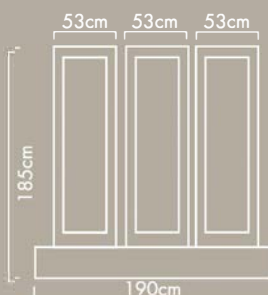
Single Tower



Twin Tower



Triple Tower



### Styles and Textures



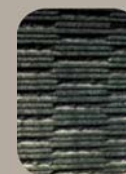
Bamboo



Black Louver Shiny Bands



Cherry Blossom



Grind



Maze



Tree of Life



Sunray



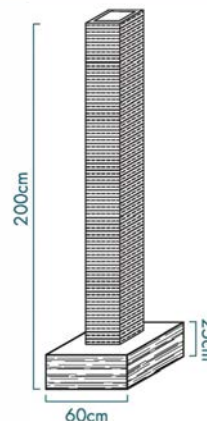
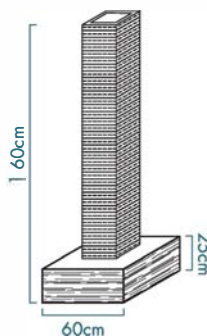
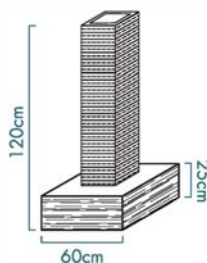
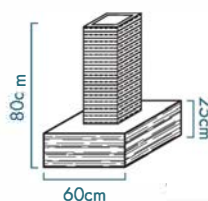
Texture

\*solid base for walls/towers is preferred: concrete slab should be 80mm (deep) or levelled solid crushed rock base with pavers

All tower packages include: stone base, pump, mesh, pebbles.

## Square Grind Column

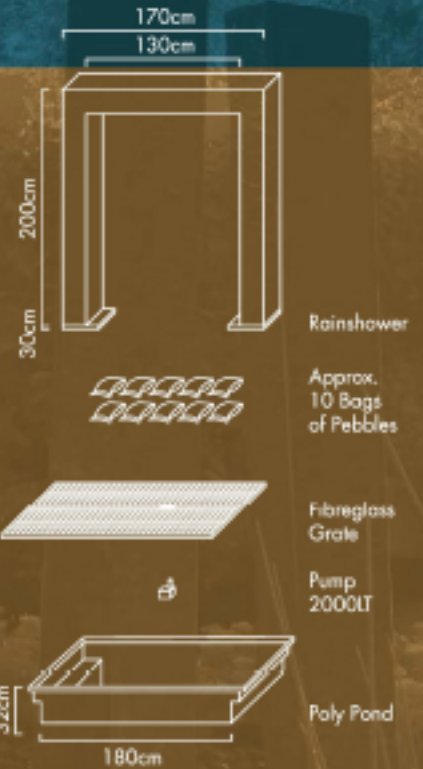
Includes base, grate, pebbles, pump, and column.



Rain Showers

The ultimate centrepiece. The Rain Shower stands at an impressive 2 metres tall and creates a curtain of water wall between it's frame.

Complete with, pond, grates, pump, 2 x lights, transformer, pebbles. The flow of the pump can be adjusted for full flow curtain or tranquil dripping. This is the pinnacle of water features. Available in copper or stainless steel this item can be custom built for specific sizes.



Sculptural Features

Modern and contemporary, these statues would look magnificent in any home and can be utilised for both indoor and outdoor use.



Kotak



Gentong



Kotak Rectangular



## Stone Water Packages

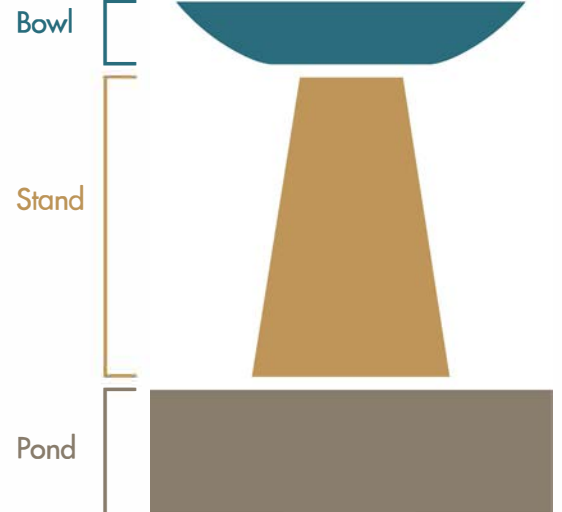
Our water packages come in a huge range of styles. Any of the pots or bowls can be converted into an overflowing water feature or a bubbler feature. Call us for advice



## Customising your own water feature

We can provide custom fibreglass ponds to any suit any area

Stone Water features typically come as packages, but you can customise your own design. Ask our expert personnel now on 02 9679 9680



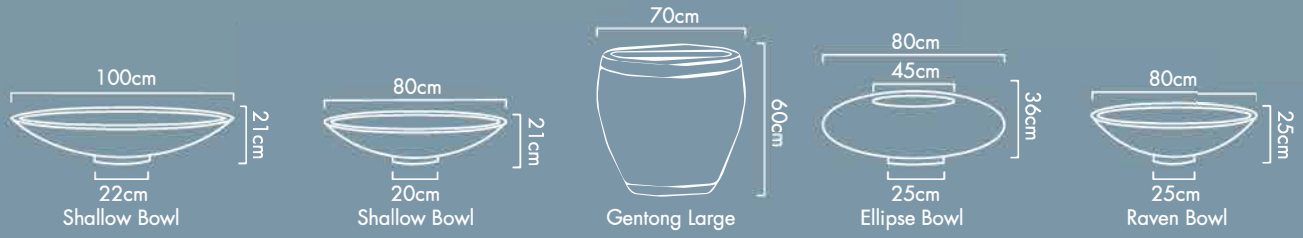
### Water Feature Packages

- XL Gentong Package
- Large Gentong Package
- Small Gentong Package: (poly pond/grate)
- Small Gentong Package: (stone pond/grate)
- 1.0m (Ellipse, Raven, Water, Shallow) Bowl Package
- 80cm (Ellipse, Raven, Water, Shallow) Bowl Package
- Tall Stand (Tapered, Round, Grove, Square) Bowl Package
- Medium Stand (Tapered, Round, Grove, Square) Bowl Package
- 30cm Stone Ball Package
- 50cm Stone Ball Package
- 70cm Stone Ball Package
- 3 Pots Kendang Package
- Stainless Steel Wet Edge Package
- Dimple (Bronze/Black) Jar Package
- Ginger (Bronze/Black) Jar Package
- Saffron (Ancient Rust) Jar Package
- Cinnamon (Ancient Rust) Jar Package

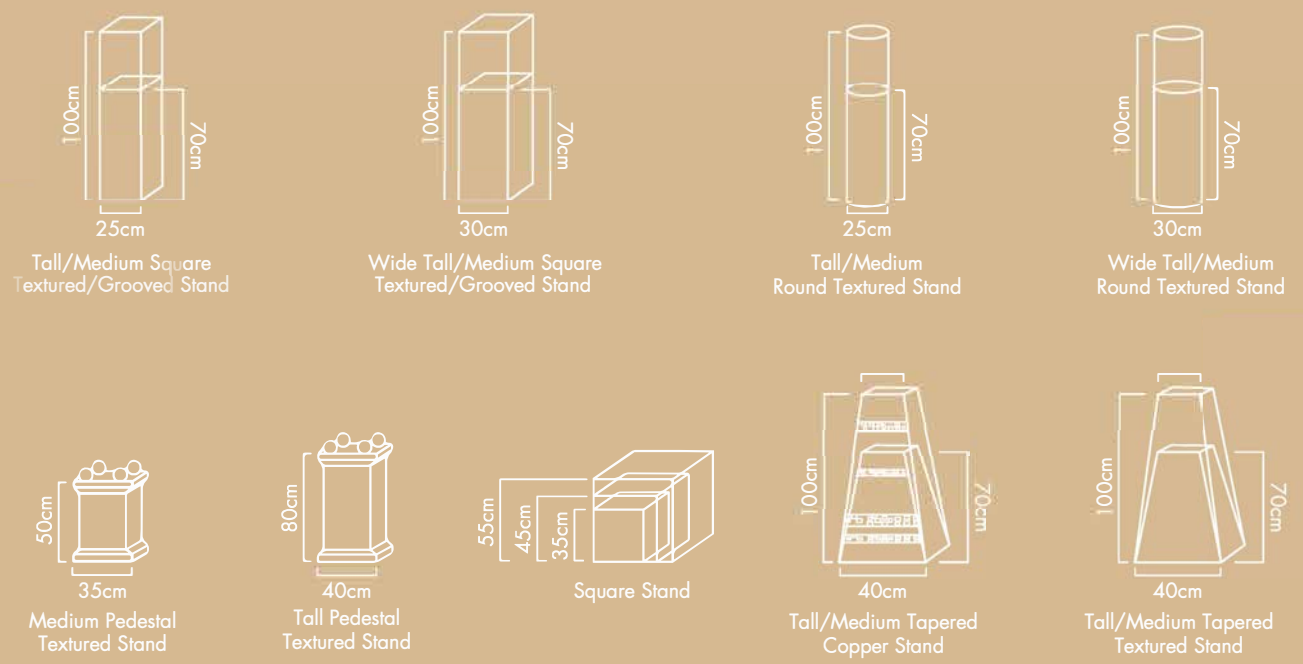
packages inc polypond, grate, pump, pebbles.

# Stone Water Components

## Bowls



## Stands



## Ponds





Ellipse Bowl

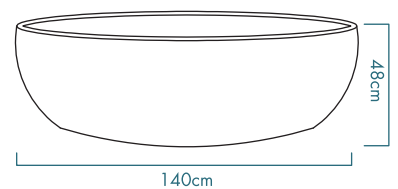
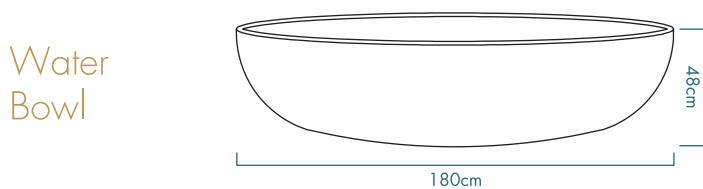
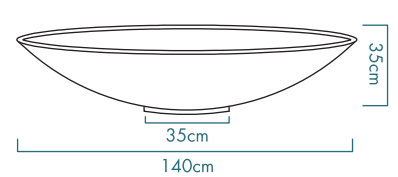
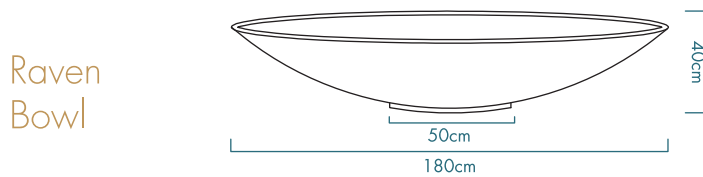
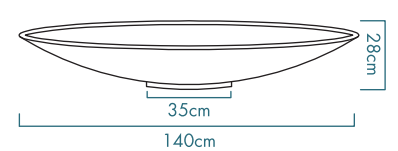
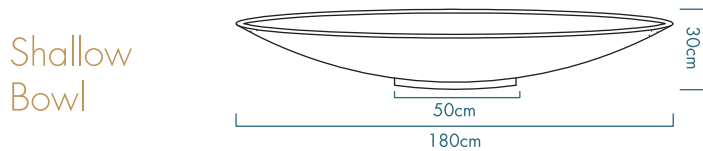
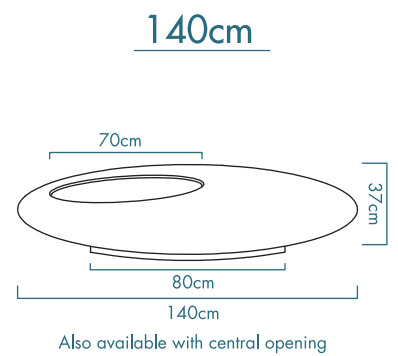
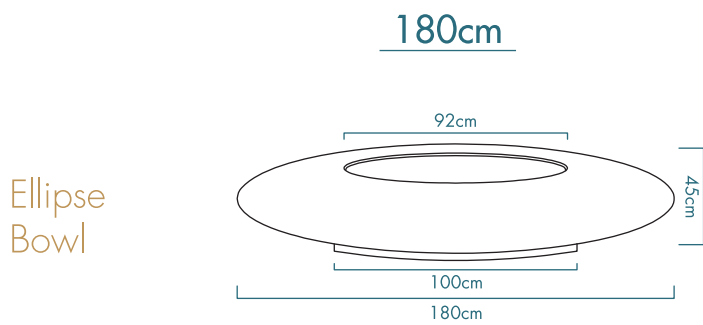


Shallow Bowl



Raven Bowl

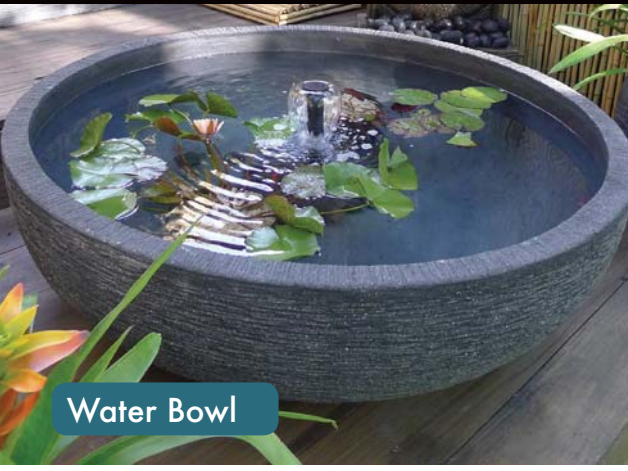
## Architectural Bowls



Oval Water Bowl

\*All bowls on this page can be converted into bubbler's as shown in image 3 & 4 above

# POTS, WATER FEATURES AND MORE

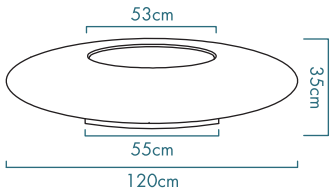


Water Bowl

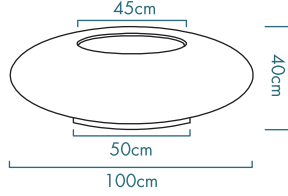


Oval Water Bowl

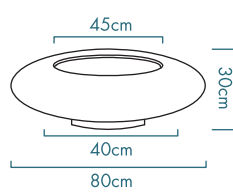
120cm



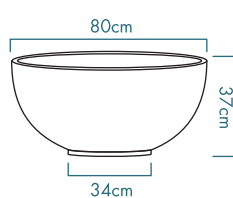
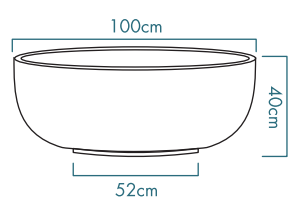
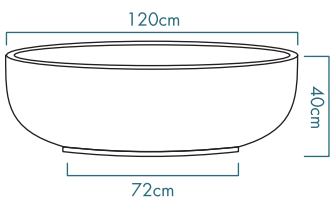
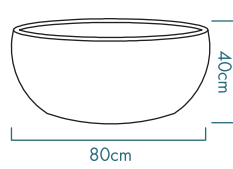
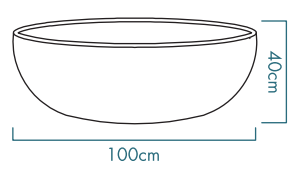
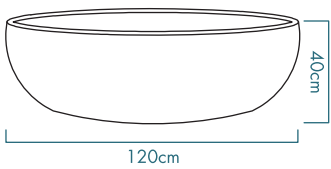
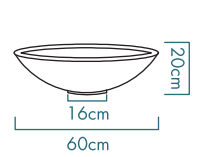
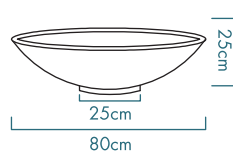
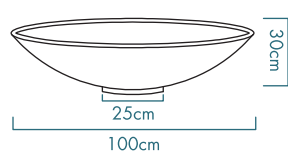
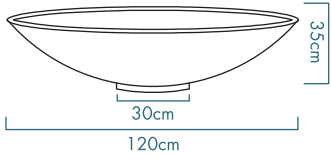
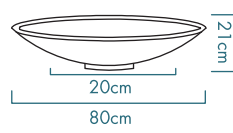
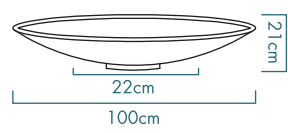
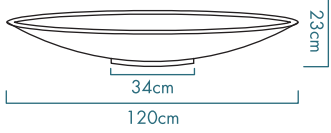
100cm



80cm



60cm



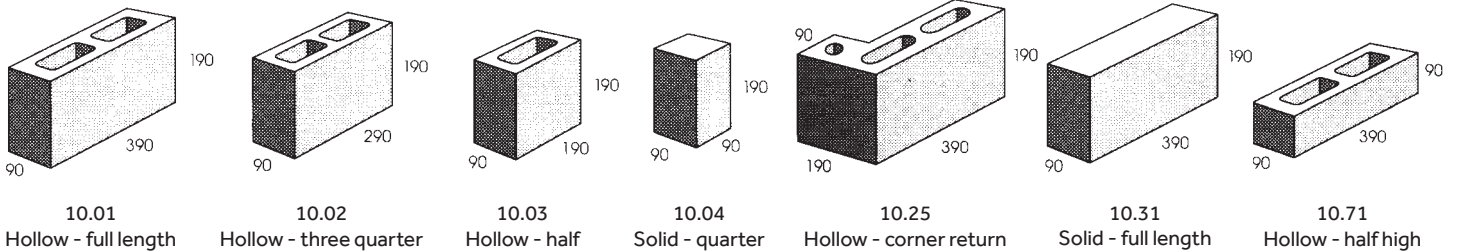
Pots and Urns

	DESCRIPTION		DIMENSIONS (CM)
	Gentong Small	Stone Natural	W50xH40
	Gentong Medium	Stone Natural	W60xH50
	Gentong Large	Stone Natural	W70xH60
	Gentong XLarge	Stone Natural	W70xH80
	Gentong XXLarge	Stone Natural	W108xH68
	Gentong XXXLarge	Stone Natural	W97xH97
	Gentong Small	Stone Charcoal	W50xH40
	Gentong Medium	Stone Charcoal	W60xH50
	Gentong Large	Stone Charcoal	W70xH60
	Gentong XLarge	Stone Charcoal	W70xH80
	Gentong XXLarge	Stone Charcoal	W108xH68
	Gentong XXXLarge	Stone Charcoal	W97xH97
	Kotak Rectangular	Stone Charcoal	W80xH40xD40
	Kotak Medium	Stone Charcoal	W40xH50
	Kotak large	Stone Charcoal	W50xH60
	Kendang Small	Stone Charcoal	W34xH60
	Kendang Medium	Stone Charcoal	W34xH80
	Kendang Large	Stone Charcoal	W34xH100
	Kendang XLarge	Stone Charcoal	W34xH120
	Kotak Pot Small (Black ,Grey, White )	Lite Weight	W70xH35xD30
	Kotak Pot Medium (Black ,Grey, White )	Lite Weight	W90xH45xD40
	Kotak Pot Large (Black ,Grey, White )	Lite Weight	W110xH55xD48
	Stone Ball Small	Stone Charcoal/Natural	30
	Stone Ball Medium	Stone Charcoal/Natural	50
	Stone Ball Large	Stone Charcoal/Natural	70
	Egg Chair (Black ,White )	Terrazzo	W80xL65cm
	Stone Bench Seat Small	Stone Charcoal	W120xH45
	Stone Bench Seat Medium	Stone Charcoal	W150xH45
	Stone Bench Seat Large	Stone Charcoal	W180xH45
	Firepit Small	Iron	W70xH35xD30
	Firepit Medium	Iron	W90xH45xD40
	Firepit Large	Iron	W110xH55xD48
	Pond Stone 60cm	Stone Charcoal	60x60x25
	Pond Stone 90cm	Stone Charcoal	90x90x25
	Pond Stone l 20cm	Stone Charcoal	l 20x l 20x25

## BETTA BLOCK 100mm Series

This quality, near vertical retaining wall system is a great do it yourself solution. No concrete footings are needed and they are flexible. You can achieve anything from 90° corners, steps, straight and even curved walls.

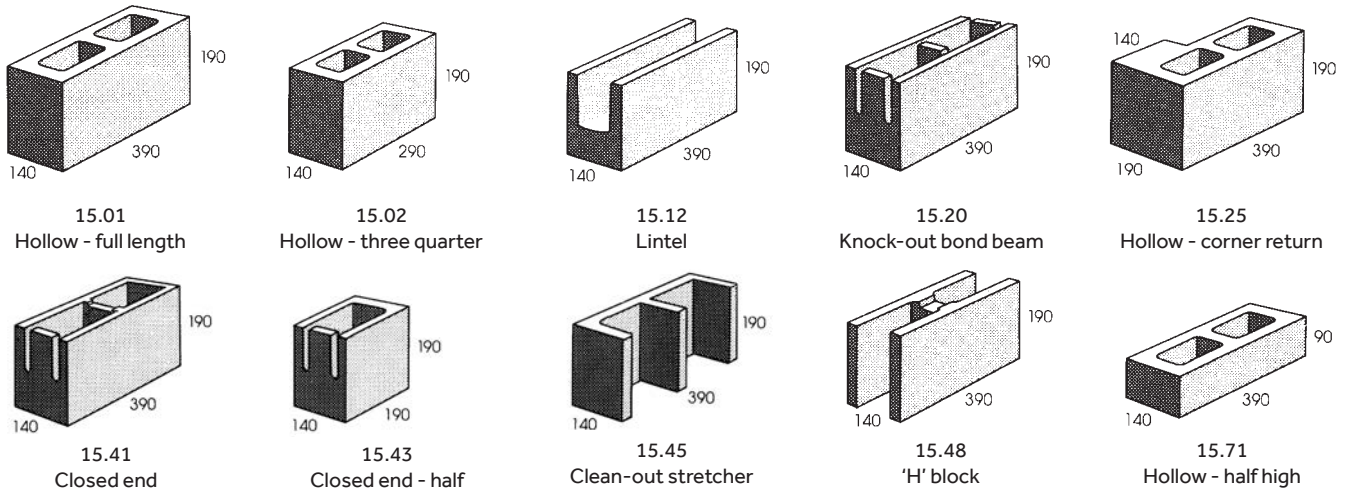
DESCRIPTION	CODE	LENGTH (mm)	WIDTH (mm)	HEIGHT (mm)	QTY	PALLET QTY
100 Standard Block	10-01 BB	390	90	190		216
100 3/4 Block	10-02	290	90	190		240
100 1/2 Block	10-03 BB	190	90	190		432
100 1/4 Block	10-04	90	90	190		720
100 Corner Return	10-25	390	90	190		120
100 Solid	10-31 BB	390	90	190		180
100 half high	10-71 BB	390	90	90		180



## BETTA BLOCK 150mm Series

This quality, near vertical retaining wall system is a great do it yourself solution. No concrete footings are needed and they are flexible. You can achieve anything from 90° corners, steps, straight and even curved walls.

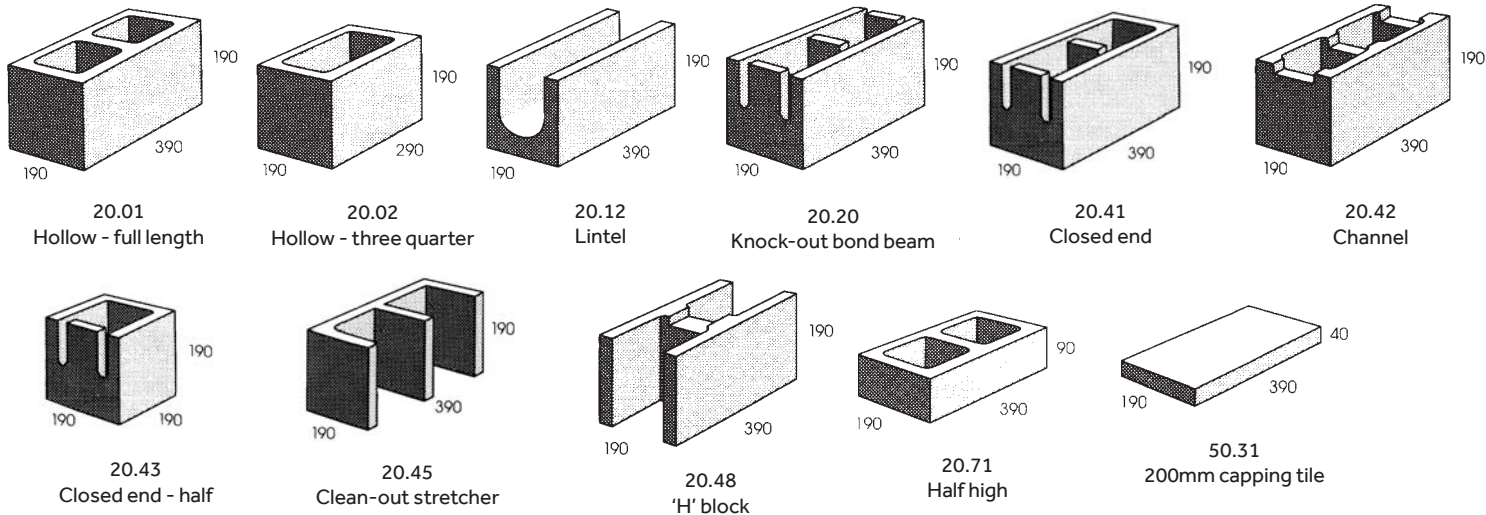
DESCRIPTION	CODE	LENGTH (mm)	WIDTH (mm)	HEIGHT (mm)	QTY	PALLET QTY
150 Standard Block	15-01 BB	390	140	190		144
150 3/4 Block	15-02 BB	290	140	190		160
150 Lintel Block	15-12	390	140	190		120
150 Knockout Bond Beam	15-20 BB	390	140	190		144
150 Corner Return	15-25	390	140	190		105
150 Stop End	15-41 BB	390	140	190		144
150 1/2 block	15-43 BB	190	140	190		216
150 Cleanout	15-45 BB	390	140	190		144
150 H block	15-48 BB	390	140	190		144
150 1/2 half high	15-71 BB	390	140	90		288



## BETTA BLOCK 200mm Series

This quality, near vertical retaining wall system is a great do it yourself solution. No concrete footings are needed and they are flexible. You can achieve anything from 90° corners, steps, straight and even curved walls.

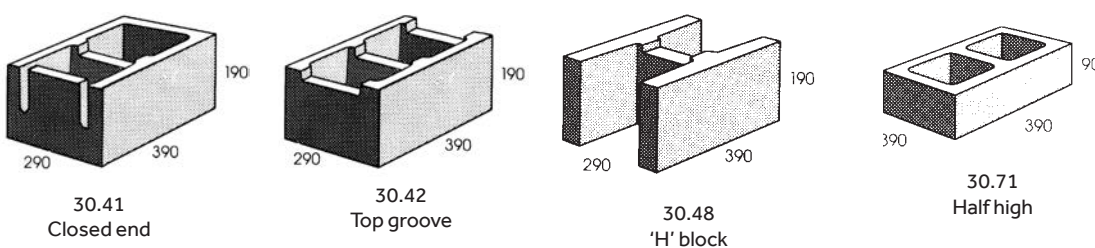
DESCRIPTION	CODE	LENGTH (mm)	WIDTH (mm)	HEIGHT (mm)	QTY	PALLET QTY
200 Standard Block	20-01 BB	390	190	190		108
200 3/4 Block	20-02 BB	290	190	190		144
200 Lintel Block	20-12	390	190	190		90
200 Knockout Bond Beam	20-20 BB	390	190	190		108
200 Stop End Block	20-41 BB	390	190	190		108
200 Top Groove Block	20-42 BB	390	190	190		108
200 1/2 Stop End Block	20-43 BB	190	190	190		216
200 Cleanout	20-45 BB	390	190	190		108
200 H block	20-48 BB	390	190	190		108
200 Half High	20-71 BB	390	190	90		216
200 Capping Block	50-31 NAT	390	195	40		288



## BETTA BLOCK 300mm Series

This quality, near vertical retaining wall system is a great do it yourself solution. No concrete footings are needed and they are flexible. You can achieve anything from 90° corners, steps, straight and even curved walls.

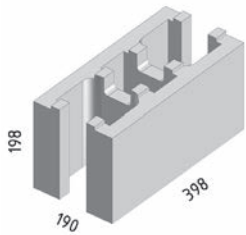
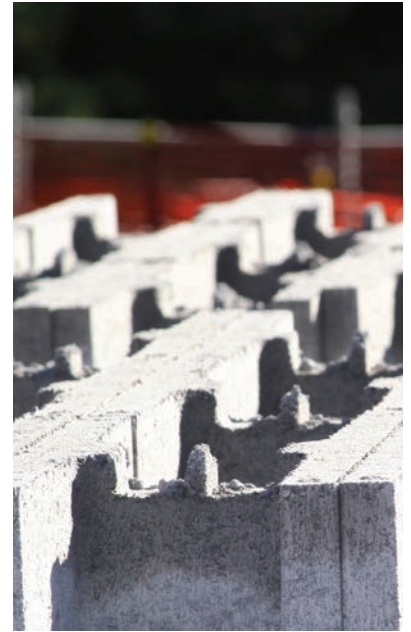
DESCRIPTION	CODE	LENGTH (mm)	WIDTH (mm)	HEIGHT (mm)	QTY	PALLET QTY
300 Stop End Block	30-41 BB	390	290	190		72
300 Top Groove Block	30-42 BB	390	290	190		72
300 H block	30-48 BB	390	290	190		72
300 Half High	30-71 BB	390	290	90		144



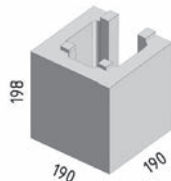
# LOCKBLOCK

This is a lightweight, do it yourself, alternative to concrete blocks. Each Lockblock has self locating connectors making them easy to lay. Perfect for retaining walls, fences and privacy walls. Use with SRW Adhesive.

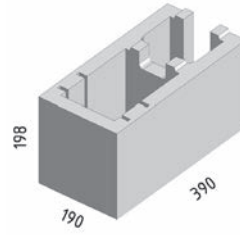
DESCRIPTION	CODE	LENGTH (mm)	WIDTH (mm)	HEIGHT (mm)	QTY	PALLET QTY
Lock Block Double U	LB 20-91	398	190	198	12.5 /m <sup>2</sup>	90
Lock Block End/Corner	LB 20-92	390	190	198		90
Lock Block Half	LB 20-93	190	190	198	25 /m <sup>2</sup>	180



Lock Block Double U



Lock Block Half



Lock Block End/Corner

# SRW ADHESIVE

Build your walls with SRW Adhesive instead of mortar and you'll save TIME & MONEY. SRW Adhesive is a rapid-set polyurethane adhesive formulated to permanently bond concrete masonry block structures.

DESCRIPTION	CODE	SIZE
SRW - ADHESIVE	SRW - ADH 10	10 oz
SRW - ADHESIVE	SRW - ADH 29	29 oz



- ✓ Fastest set-up time on the market!
- ✓ High temperature adhesive suitable for firepits
- ✓ For use on dry or damp surfaces
- ✓ Premium, long lasting strength
- ✓ Interior/exterior use
- ✓ Specially formulated for use on construction and landscape projects



**MASONRY & SLATE**  
Quality First

designer  
**WATER FEATURES**



visit our showroom for more...